

PUMA TRAVEL TRAILERS, FIFTH WHEELS, DESTINATION TRAILERS & TOY HAULERS

PUMA

BY PALOMINO SINCE 1968



PUMA TRAVEL TRAILERS

OUTSIDE KITCHEN KEY: ● OUTSIDE KITCHEN W/ GRIDDLE, ● MINI KITCHEN W/ GRIDDLE, ● MICRO KITCHEN W/ GRIDDLE



25 RKQB ●



26 FKDS ●



26 RBSS ●



26 RLS ●



28 BHSS2 ●



28 DBFQ ●



28 RKQS ●



29 RDBS ●



32 BHDB ●●



32 BHFS ●



32 BHQS ●



32 DBTS ●



32 MBDS ●



32 RBFQ ●●

	25 RKQB	26 FKDS	26 RBSS	26 RLS	27 RDBS	27 RLSS	28 BHFQ	28 BHSS	28 BHSS2	28 DBFQ	28 RKQS	29 RDBS	30 RKQS	31 FKRK	31 QBBH	31 RLQS	32 BHDB	32 BHFS
Hitch Weight (lbs)	670	975	610	910	1030	756	830	835	843	694	870	1020	1085	1195	1049	975	928	1175
Axle Weight (lbs)	5340	5580	5385	5640	6400	5409	6075	6640	6670	6136	6345	6445	6830	7460	7144	7795	7759	8395
UVW (lbs)	6048	6593	6033	6588	7468	6203	6943	7513	7574	6868	7253	7503	7974	8693	8231	8808	8725	9608
GVWR (lbs)	7598	8193	7610	7910	8968	7756	8443	9063	9063	8500	8800	9003	9600	9995	9995	10500	9995	11308
Cargo Capacity (lbs)	1550	1600	1577	1322	1500	1553	1500	1550	1489	1632	1547	1500	1626	1302	1764	1692	1270	1700
Exterior Length	29' 7"	29' 11"	29' 10"	31' 11"	33' 7"	31' 7"	34' 3"	36' 10"	36' 10"	32' 10"	34' 5"	34' 10"	36' 1"	37' 10"	37' 10"	36' 1"	38' 4"	38' 9"
Exterior Height w/AC	11' 1"	11' 1"	11' 1"	11' 1"	11' 1"	11' 1"	11' 1"	11' 1"	11' 1"	11' 1"	11' 1"	11' 1"	11' 1"	11' 1"	11' 1"	11' 1"	11' 1"	11' 1"
Water Heater Cap. (gal)	6	6	6	6	6	6	6	6	6	6	6	6	6	6	6	6	6	6
Fresh Water Cap. (gal)	43	43	43	43	43	43	43	43	43	43	43	43	43	43	43	43	43	43
Black Water Cap. (gal)	35	35	35	35	35	35	35	35	35	35	35	35	35	30	35	35	65	35
Grey Water Cap. (gal)	70	70	70	65	70	35	70	65	65	65	70	35	67	65	70	35	70	70
Tire Size (in)	15"	15"	15"	15"	15"	15"	15"	15"	15"	15"	15"	15"	15"	15"	15"	15"	15"	15"
Awning Size (ft)	20'	21'	21'	20'	21'	21'	21'	20'	20'	21'	21'	20'	21'	21'	21'	13'	21'	21'

REFER TO BACK COVER FOR CHART DEFINITIONS.



27 RBDS ●



27 RLSS



28 BHFQ ●



28 BHSS ●



30 RKQS ●



31 FKRK ●



31 QBBH ●●



31 RLQS



32 BH2B ●



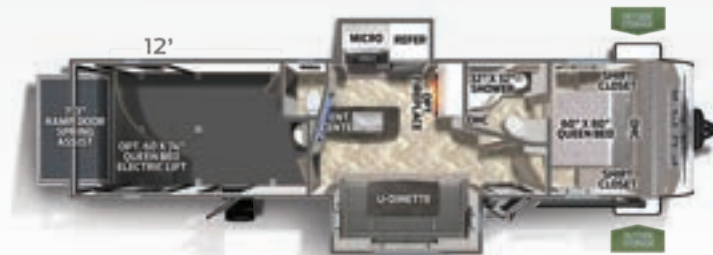
32 RBFQ2

OUTSIDE KITCHEN OPTIONS Available on select models.



32 BHQS	32 BH2B	32 DBTS	32 MBDS	32 RBFQ	32 RBFQ2
1045	1030	1029	1090	948	932
7968	7955	8075	7705	8012	8106
9072	9023	9128	8833	8998	9237
10800	11230	11215	10533	10500	10500
1726	1700	2087	1700	1502	1263
38' 9"	38' 6"	38' 8"	38' 9"	36' 11"	36' 11"
11' 1"	11' 1"	11' 1"	11' 1"	11' 1"	11' 1"
6	6	6	6	6	6
43	43	43	43	43	43
65	65	35	35	35	35
70	95	65	35	65	65
15"	15"	15"	15"	15"	15"
19'	21'	20'	15'	21'	21'

TOY HAULER TRAVEL TRAILER



33 THDS

33 THDS	
Hitch Weight (lbs)	1745
Axle Weight (lbs)	7960
UVW (lbs)	9743
GVWR (lbs)	11700
Cargo Capacity (lbs)	1957
Exterior Length	38' 6"
Exterior Height w/AC	12' 2"
Water Heater Cap. (gal)	12
Fresh Water Cap. (gal)	98
Black Water Cap. (gal)	35
Grey Water Cap. (gal)	65
Tire Size (in)	15"
Awning Size (ft)	21'

REFER TO BACK COVER FOR CHART DEFINITIONS.



253 FBS ●



255 RKS ●



265 RDS ●



257 RESS ●

PUMA FIFTH WHEELS



295 BHSS ●●



315 BHTS ●



299 BHS ●



	253 FBS	255 RKS	257 RESS	265 RDS	299 BHS	295 BHSS	315 BHTS
Hitch Weight (lbs)	1128	1102	1262	1480	1455	1358	1525
Axle Weight (lbs)	5757	5614	6186	5845	6875	7336	7340
UVW (lbs)	6788	6754	7419	7363	8389	8732	8924
GVWR (lbs)	8800	8800	9400	9363	10350	10750	11200
Cargo Capacity (lbs)	2012	2046	1981	2000	1961	2018	2276
Exterior Length	28'	28' 5"	30' 8"	30' 5"	34' 11"	34' 4"	37' 9"
Exterior Height w/AC	12' 2"	12' 2"	12' 2"	12' 2"	12' 2"	12' 4"	11' 2"
Water Heater Cap. (gal)	6	6	6	6	6	6	6
Fresh Water Cap. (gal)	43	43	43	43	43	43	43
Black Water Cap. (gal)	30	30	30	30	30	35	35
Grey Water Cap. (gal)	70	70	70	35	70	35	70
Tire Size (in)	15"	15"	15"	15"	15"	15"	15"
Awning Size (ft)	17'	18'	18'	17'	18'	18'	19'

REFER TO BACK COVER FOR CHART DEFINITIONS.

OUTSIDE KITCHEN OPTIONS

Available on select models.

OUTSIDE KITCHEN W/ GRIDDLE



MINI KITCHEN W/ GRIDDLE



MICRO KITCHEN W/ GRIDDLE



PUMA UNLEASHED TOY HAULERS

	382 THS	383 DSS
Hitch Weight (lbs)	1900	1895
Axle Weight (lbs)	8280	8825
UVW (lbs)	10218	10758
GVWR (lbs)	13900	13895
Cargo Capacity (lbs)	3682	3137
Exterior Length	39' 10"	39' 10"
Exterior Height w/AC	12' 8"	12' 8"
Water Heater Cap. (gal)	12	12
Fresh Water Cap. (gal)	98	98
Black Water Cap. (gal)	35	65
Grey Water Cap. (gal)	70	65
Tire Size (in)	16"	16"
Awning Size (ft)	21'	21'

REFER TO BACK COVER FOR CHART DEFINITIONS.

TOY HAULER HEIGHTS INCLUDING OPTIONS FROM THE FLOOR

	382 THS	383 DSS
ONE ELECTRIC BED	84"	84"
TWO ELECTRIC BEDS	75"	75"
HAPPIJACK	84"	84"
ENTRANCE AT DOOR	86"	86"
TO BOTTOM OF A/C	88.5"	88.5"
TO CEILING	91.5"	91.5"



382 THS



383 DSS • 98" RECLINING SOFA



383 DSS

PUMA DESTINATION TRAVEL TRAILERS

**STYLE
SELECTION
VALUE**

PUMA



37 PFL



38 DEN



38 RLB



38 RLQ



39 FKL



39 PFK



39 DBT



39 PQB

	37 PFL	38 DEN	38 RLB	38 RLQ	39 FKL	39 PFK	39 DBT	39 PQB
Hitch Weight (lbs)	1780	1295	1525	1469	1540	1392	1439	1413
Axle Weight (lbs)	7914	8684	8656	7937	8856	8553	8664	9237
UVW (lbs)	9753	9979	10240	9468	10455	10004	10162	10709
GVWR (lbs)	11940	11500	11685	11629	11700	11592	12000	13413
Cargo Capacity (lbs)	2227	1521	1445	2161	1245	1588	1838	2704
Exterior Length	40' 8"	40' 6"	41' 10"	39' 9"	42' 1"	40' 8"	42' 4"	42' 3"
Exterior Height w/AC	11' 9"	11' 9"	11' 9"	11' 9"	11' 9"	11' 9"	11' 9"	11' 9"
Water Heater Cap. (gal)	12	12	12	12	12	12	12	12
Fresh Water Cap. (gal)	43	43	43	43	43	43	43	43
Black Water Cap. (gal)	35	35	35	35	30	35	65	65
Grey Water Cap. (gal)	35	35	70	35	70	65	105	105
Tire Size (in)	15"	15"	16"	15"	15"	15"	16"	16"
Awning Size (ft)	19'	18'	19'	18'	21'	21'	21'	21'

REFER TO BACK COVER FOR CHART DEFINITIONS.

PUMA PACKAGES

TRAVEL TRAILERS

VALUE SHOPPER PACKAGE (Required)

- Jack Knife Sofa w/Pull-Down Center Drink Tray & Storage Underneath
- Electric Awning w/LED Light Strip
- Pre-wired for Solar System
- LED Lighting
- 13,500 BTU Ducted A/C
- Congoleum® Designer Carefree Linoleum with 3 – Year Cold Crack Warranty
- Bedspread
- Bedroom TV Hook-up
- TV Antenna w/Booster & Cable Hook-up
- Tub Surround
- WiFi Prep
- AM/FM/Bluetooth Stereo
- Glass Range Cover
- Undermount Sink w/Cover

ADVANTAGE PACKAGE (Required)

- 1.3 Cu. Ft. Stainless Steel Microwave
- Enclosed Underbelly
- 2 Outside Speakers
- 6 gal. Gas/Electric Water Heater
- Outside Shower
- Spare Tire
- 21" Stainless Steel Oven & Range Hood
- Folding Grab Handle
- Bath Skylight
- 11 Cu. Ft. (12V) Stainless Steel Residential Refrigerator
- Upgrade Faucet w/Pull Down Sprayer
- Roller Shades

ELECTRIC POWER PACKAGE (FW) (Required)

- 2 Power Front Jacks
- 2 Electric Stabilizer Jacks

OPTIONAL PACKAGES

ELECTRIC POWER PACKAGE (TT)

- 4 Electric Stabilizer Jacks
- 3,500 Lb. Electric Tongue Jack

LIMITED EDITION PACKAGE

- 50 Amp Service (Second A/C prep, includes bedroom roof vent)
- Roof Ladder
- 15,000 BTU Ducted A/C IPO 13,500 BTU
- Black Tank Flush
- Aluminum Solid Triple Step
- Fireplace

FIFTH WHEELS

VALUE SHOPPER PACKAGE (Required)

- Jack Knife Sofa w/Pull-Down Center Drink Tray & Storage Underneath
- Electric Awning w/LED Light Strip
- Pre-wired for Solar System
- LED Lighting
- 13,500 BTU Ducted A/C
- Congoleum® Designer Carefree Linoleum with 3 – Year Cold Crack Warranty
- Bedspread
- Bedroom TV Hook-up
- TV Antenna w/Booster & Cable Hook-up
- Tub Surround
- WiFi Prep
- AM/FM/Bluetooth Stereo
- Glass Range Cover
- Undermount Sink w/Cover

ADVANTAGE PACKAGE (Required)

- 1.3 Cu. Ft. Stainless Steel Microwave
- Enclosed Underbelly
- 2 Outside Speakers
- 6 gal. Gas/Electric Water Heater
- Outside Shower
- Spare Tire
- 21" Stainless Steel Oven & Range Hood
- Folding Grab Handle
- Bath Skylight
- 11 Cu. Ft. (12V) Stainless Steel Residential Refrigerator
- Upgrade Faucet w/Pull Down Sprayer
- Roller Shades

ELECTRIC POWER PACKAGE (FW) (Required)

- 2 Power Front Jacks
- 2 Electric Stabilizer Jacks

OPTIONAL PACKAGES

ELECTRIC POWER PACKAGE (TT)

- 4 Electric Stabilizer Jacks
- 3,500 Lb. Electric Tongue Jack

LIMITED EDITION PACKAGE

- 50 Amp Service (Second A/C prep, includes bedroom roof vent)
- Roof Ladder
- 15,000 BTU Ducted A/C IPO 13,500 BTU
- Black Tank Flush
- Aluminum Solid Triple Step
- Fireplace w/Textured Tile

UNLEASHED TOY HAULERS

VALUE SHOPPER PACKAGE (Required)

- Jack Knife Sofa w/Pull-Down Drink Tray & Storage Underneath
- Electric Awning w/LED Light Strip
- Pre-wired for Solar System
- LED Lighting
- 13,500 BTU Ducted A/C
- Zip Screen
- 40" LED TV
- Congoleum® Designer Carefree Linoleum with 3 – Year Cold Crack Warranty
- Bedspread
- Bedroom TV Hook-up
- TV Antenna w/Booster & Cable Hook-up
- Tub Surround
- AM/FM/Bluetooth Stereo
- WiFi Prep
- Glass Range Cover
- Undermount Sink w/Cover

ELECTRIC POWER PACKAGE (Required)

- 2 Power Front Jacks
- 2 Electric Stabilizer Jacks

ADVANTAGE PACKAGE (Required)

- 1.3 Cu. Ft. Stainless Steel Microwave
- Enclosed Underbelly
- (2) Outside Speakers
- 12 Gal. Gas/Electric Water Heater
- Outside Shower
- Roller Shades
- Spare Tire
- 21" Stainless Steel Oven & Range Hood
- Folding Grab Handle
- Bath Skylight
- 11 Cu. Ft. (12V) Stainless Steel Residential Refrigerator
- Upgrade Faucet w/Pull Down Sprayer

OPTIONAL PACKAGES

XL EDITION PACKAGE

- 30 lb Gas bottles
- 50 AMP Service (Second A/C Prep in garage – Includes roof vent)
- Roof Ladder
- 15,000 BTU Ducted A/C In Living Area
- 30 Gal Fuel Pump Station
- Aluminum Solid Triple Step IPO Std Step
- Black Tank Flush
- Fireplace w/Textured Tile
- Mission Aluminum Modified Rims/Radial Tires

DESTINATION TRAILERS

VALUE SHOPPER PACKAGE (Required)

- Pre-wired for Solar System
- Folding Grab Handle
- Roller Shades
- LED Lighting
- 13,500 BTU Ducted A/C
- 18 Cu. Ft. Stainless Steel Residential Refrigerator w/Ice Maker
- 1.3 Cu. Ft. Microwave
- 21" Stainless Steel Oven w/Cooktop
- Cooktop & Range Hood
- Congoleum® Designer Carefree Linoleum with 3 – Year Cold Crack Warranty
- Bedspread
- Bedroom TV Hook-up
- TV Antenna w/Booster & Cable Hook-up
- ABS Tub Surround
- 12 Gal Gas/Electric DSI Water Heater
- AM/FM/Bluetooth Stereo
- Undermount Sink w/Cover
- Upgrade Kitchen Faucet
- Black Tank Flush
- Patio Door
- WiFi Prep

OPTIONAL PACKAGES

MARQUIS EDITION PACKAGE

- 4 Stabilizer Jacks
- 30 lb Gas Bottles & Cover
- 50 AMP Service (Second A/C Prep)
- 15,000 BTU Ducted A/C IPO 13,500
- Outside Shower
- Solid Surface Countertop
- Table & Chairs IPO Dinette
- 12V Ceiling Fan in Living Room
- 2 Exterior Speakers
- Fireplace w/Textured Tile
- Tri-Fold Sofa IPO Jackknife in Living Room
- Roller Shades

**GET
INTO THE
WILD**

PUMA STANDARD FEATURES

EXTERIOR

- Friction Hinged Radius Entry Doors
- Powder Coated Frames
- Super Lube Axles
- Tinted Safety Glass
- Clamp Ring Windows
- Double Entry Doors (Where applicable)
- Pass-Thru Storage (Where applicable)
- Power Awning w/LED Light Strip (Optional on Destination Trailers)
- Front Fiberglass Cap w/Diamond Plate (FW)
- DiFlex II™ TPO Roof by Dicor – 12 Year Manufacturer's Limited Warranty
- 4 Manual Stabilizer Jacks
- 9" Three-tier Steps
- Rain Gutters w/Large Downspouts
- ABS Automotive Style Fender Skirts
- Radius Baggage Doors
- Darco Wrapped Underbelly
- 5/8" Araucopy Plywood Floor Decking (25 Year manufacturer's limited warranty)
- 2" x 3" Flush Floor Joists on 12" Centers
- Pass-Thru Exterior Baggage Compartments (Where applicable)
- 2-20 Lb. Gas Bottles
- 6 Gal. DSI Hot Water Heater
- Rack & Pinion Electric Slide System w/Manual Override (Standard on all slide outs)
- Clamp Ring Luggage Doors
- Large Front Pass Thru Baggage Door (TT only)
- Front Fiberglass Cap w/LED Lighting (31FKRK only)
- Back-up Camera Prep
- Solar Prep

INTERIOR

- 80" Interior Height
- Floor Ducted Heat
- USB Charging Ports
- 35,000 BTU Furnace
- 14" Deep Overhead Cabinets in Super-Slide Models
- Decorative Kitchen Backsplash
- Kitchen Ball Bearing Drawer Guides
- Spice Rack (Kitchen)
- Divided Silverware Drawer
- High-rise, Pull-down Kitchen Faucet
- 3-Burner, High Output Range
- Undermount Stainless Steel Sink
- Routed Metal Backsplash
- Roll-up Stainless Steel Sink Covers
- New Hardware Black Handles & Hinges (Kitchen, Living Room)
- Glass Range Cover
- Built-in Knife Rack
- LED Ceiling Lights
- 55 Amp Converter w/Battery Charger
- AM/FM/Bluetooth Stereo
- King Antenna w/WiFi Prep

- Jack Knife Sofa w/Pull-down Center Drink Tray – Storage Underneath
- Jack Knife Sofa Under Bunks
- Push-back Recliner(s)*
- Wood Medicine Cabinet with Mirrored Door
- Power Vent in Bath
- Glass Shower Door*
- 12V Shower LED Light

- 60" x 80" Queen Beds
- High Density Foam Mattress
- Bedroom Carpet (FW)
- Upgraded Soft Teddy Bear Bunk Mats
- Shirt Closet in Front Bedrooms
- Nightstands in Front Bedrooms
- Two Interior Decors
- Coat Hooks in Entry Way (Most models)

- Square Dinette Seat Bases w/Cabinet Storage
- Residential Carpet with pad
- Designer Window Treatments (Living room)

SAFETY FEATURES

- CO2 Detector
- LP Leak Detector
- Fire Extinguisher
- Smoke Detector

PUMA CONSTRUCTION



**LONGER LASTING.
BETTER BUILT.**

Smooth, aerodynamic radius front metal with diamond plate

- A.** Rubber Roof (12 year limited warranty)
- B.** King HD TV Antenna
- C.** 3/8" Roof Decking
- D.** 4-1/2" Crowned Truss Roof Rafters
- E.** Insulated Wrapped Ducted Air Conditioning Runs
- F.** Molded ABS Fender Skirt
- G.** Sturdy .024 and .030 Gauge Aluminum Skin
- H.** Lighted LED Speakers
- I.** Color Band Metal Enhances Exterior Looks
- J.** Radius Exterior Doors

- K.** R-7 Fiberglass Insulation Cut and Glued Between Sidewall Studs
- L.** Sidewall Studs Spaced 16" Apart
- M.** Silicone Sealed Radius Compartment Doors
- N.** Front Diamond Plate
- O.** Smooth, Aerodynamic Radius Front Metal with Bold Exterior Graphics
- P.** Molded ABS LP Tank Cover
- Q.** Optional Lighted Power Jack
- R.** Rugged, Powder Coated Steel I-Beam Frame
- S.** Floor Ducted Heat

- T.** Puma Next Generation™ Enclosed Water Tanks
- U.** Congoleum® Designer Carefree Linoleum with 3 – Year Cold Crack Warranty
- V.** Longitudinal Floor Studding Spaced 12" Apart
- W.** 51 Gallon Fresh Water Tank
- X.** Steel Crossmembers for Added Support
- Y.** Residential Grade Carpet with Pad on Slide Outs
- Z.** 5/8" Araucopy Plywood Floor Decking (25 Year manufacturer's limited warranty)



Learn More
Scan this barcode using a QR Reader on your smart phone to learn more about Forest River.



A Berkshire Hathaway company.

WWW.KOACARECAMPS.ORG




Fighting Cancer + Making Memories



**24/7 EMERGENCY
ROADSIDE ASSISTANCE
WITH VEHICLE PURCHASE***

TOWING
JUMP-STARTS
TIRE CHANGES
FLUID DELIVERY
LOCKOUT
SERVICE

WINCH-OUT
MOBILE MECHANIC
TECHNICAL
SUPPORT
DEALER LOCATOR
SERVICES



*VALID FOR 1 YEAR FROM DATE OF PURCHASE



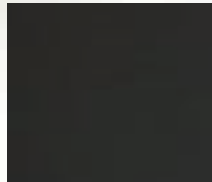
PRE-DELIVERY INSPECTION FACILITY

20,000 square feet of quality assurance. The bare essentials for a premium product. This state-of-the-art facility gives immediate daily feedback to production for quality assurance in every unit built.

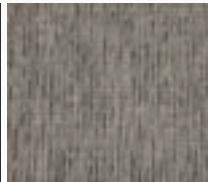
AN RV FOR EVERY LIFESTYLE

Puma has built its success by offering the broadest selection of RV's for every lifestyle, while incorporating the latest in industry innovations. Customer driven features lead Puma's line-up with floorplans that capitalize on the most popular features, in bunk, non-bunk, Toy Hauler and Destination trailers. Puma's selection of popular packages adds value for years of fun with friends and family. Campers get a lot of comfort for their investment with many popular standard features.

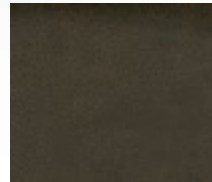
PUMA DÉCOR OPTIONS



GRANITE



CAFE LATTE



FLOORING



SLATE

Specification Definitions :: GVWR (Gross Vehicle Weight Rating) - is the maximum permissible weight of the unit when fully loaded. It includes all weights, inclusive of all fluids, cargo, optional equipment and accessories. For safety and product performance do NOT exceed the GVWR. // **GAWR (Gross Axle Weight Rating)** - is the maximum permissible weight, including cargo, fluids, optional equipment and accessories that can be safely supported by a combination of all axles. // **UVW (Unloaded Vehicle Weight)** - is the typical weight of the unit as manufactured at the factory. It includes all weight at the unit's axle(s) and tongue or pin and LP Gas. The UVW does not include cargo, fresh potable water, additional optional equipment or dealer installed accessories. *Estimated average based on standard build optional equipment. // **CCC (Cargo Carrying Capacity)**** - is the amount of weight available for fresh potable water, cargo, additional optional equipment and accessories. CCC is equal to GVWR minus UVW. Available CCC should accommodate fresh potable water (8.3 lbs per gallon). Before filling the fresh water tank, empty the black and gray tanks to provide for more cargo capacity. ** Estimated average based on standard build optional equipment. // Each Forest River RV is weighed at the manufacturing facility prior to shipping. A label identifying the unloaded vehicle weight of the actual unit and the cargo carrying capacity is applied to every Forest River RV prior to leaving our facilities. The load capacity of your unit is designated by weight, not by volume, so you cannot necessarily use all available space when loading your unit. // All information contained in this brochure is believed to be accurate at the time of publication. However, during the model year, it may be necessary to make revisions and Forest River, Inc., reserves the right to make all such changes without notice, including prices, colors, materials, equipment and specifications as well as the addition of new models and the discontinuance of models shown in this brochure. Therefore, please consult with your Forest River dealer and confirm the existence of any materials, design or specifications that are material to your purchase decision. Litho. U.S.A. FOR 2111 P&W: 2023.02.02

FREE MEMBERSHIP
to Forest River Owners' Group

www.forestriverfrog.com



CUSTOMER SATISFACTION



www.ForestRiverBuyLocal.com

PALOMINO
PUMA

Puma by Palomino, a Division of Forest River, Inc.
2551 Century Drive • Goshen, IN 46528
www.palominorv.com

YOUR **PUMA** DEALER